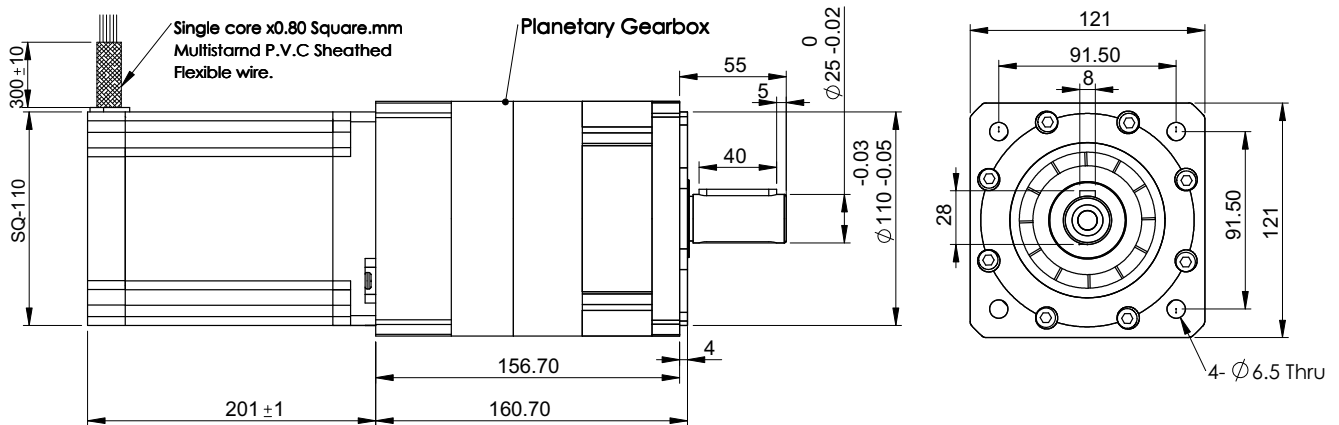
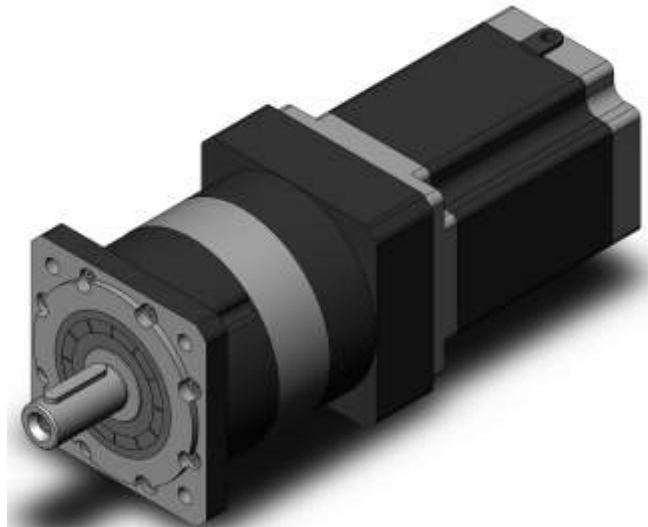
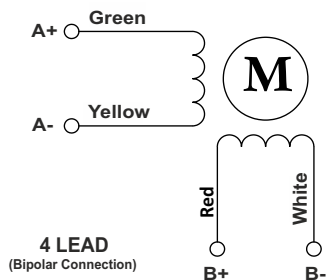


**SPECIFICATION SHEET**  
**Bholanath**

**STEPPER MOTOR**  
**BH110SH 201 - 8004 PL-5**  
**HIGH TORQUE HYBRID**



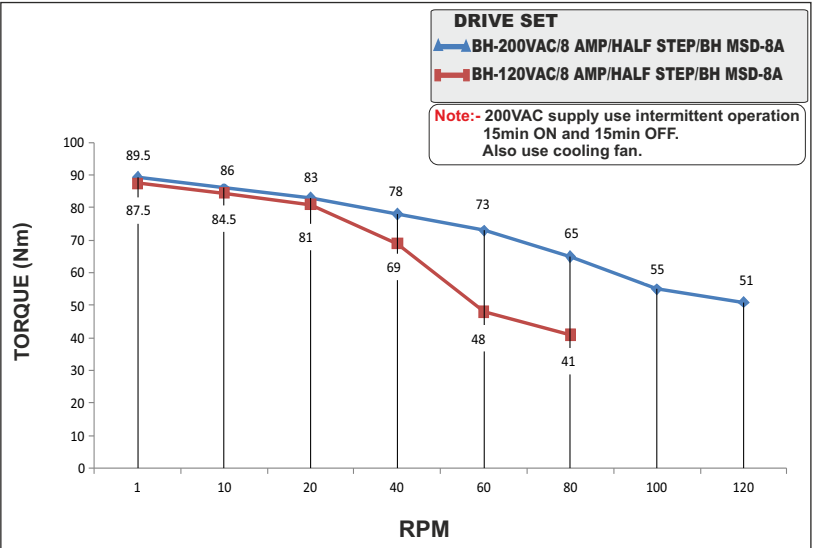
**Wiring Diagram**



Max.RPM At Gear Box Shaft - 120 RPM

**CHARACTERISTICS**

Motor - Bipolar
Steps per Revolution - 200
Step Angle - 1.8 degree
Motor Step Angle Accuracy- ± 3 Arc minute
Dimensions - Refer drawing
Weight with Gear box - 17 Kg
Insulation Class - Class H
Protection Class - DIN40050 - IP30
Resistance of Insulation - 100M Ω 500 VDC
Resistance per phase - 0.73 Ω
Inductance per phase - 14.0 mH
Normal current per phase - 8.0Amp
Operating Voltage - 120 to 200VAC
Stock Temperature - (-10°C to + 70°C)
Operation Temperature - (-10°C to + 40°C)
Holding Torque Of Motor - 30.0 Nm
Holding Torque with gear Box - 150.0 Nm (1500 Kgcm)
Max Radial load(12mm from flange) - ≤ 910N
Max Shaft Axial Load - ≤ 580N
Gear Box Ratio - 5:1
Backlash Arcmin - Precision 10



**PLANETARY GEAR BOX STEPPER MOTOR -BH110SH201-8004PL-5**