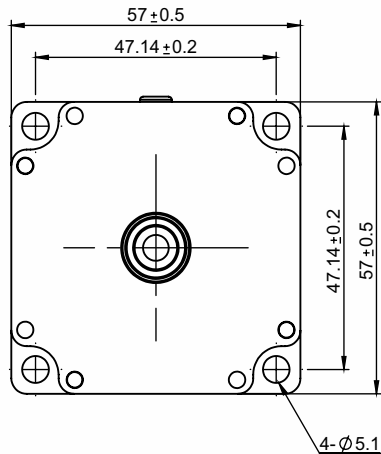


SPECIFICATION SHEET
Bholanath

STEPPER MOTOR
BH 57 SH 76 - 2804 LA-NC (M10 X 1.5)
HIGH TORQUE HYBRID

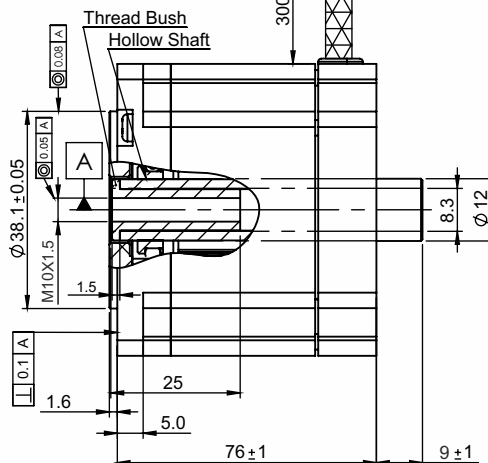


Front View & Mounting

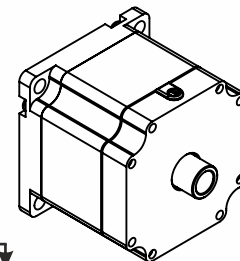
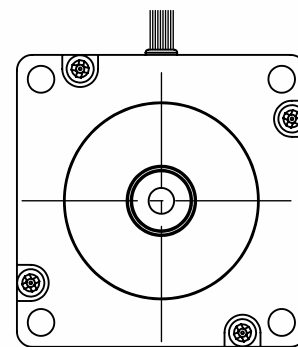


Single Core x 0.34 Sq.mm
Multistrand P.V.C.Sheathed
flexible wire.

Side View



Rear View



- Screw Length : 200 mm.
- Model Type : Linear Actuator Non Captive Stepper Motor

TECHNICAL DATA

CHARACTERISTICS

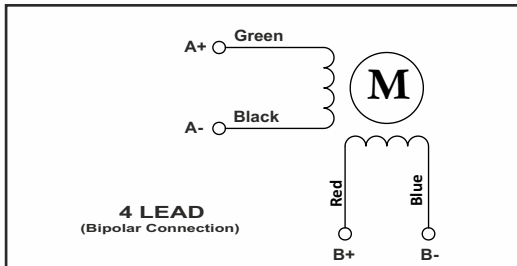
- Step Angle - 1.8°
- Step Angle Accuracy - ± 3 Arc Minute
- Insulation Class - H
- Ambient Temperature - (- 20°C to + 50°C)
- Temperature Rise - 80° C Max.
(Rated Current Phase 2 ON)
- Insulation Resistance
100 M Ohms Min.500 VDC
- Dielectric Strength
500 VAC For One Minute
- Shaft Radial Play
0.02 Max. Play (450 G Load)
- Shaft Axial Play
0.08 Max. Play (450 G Load)
- Max.Radial Force
75 N (20MM From Front Flange)

SPECIFICATION

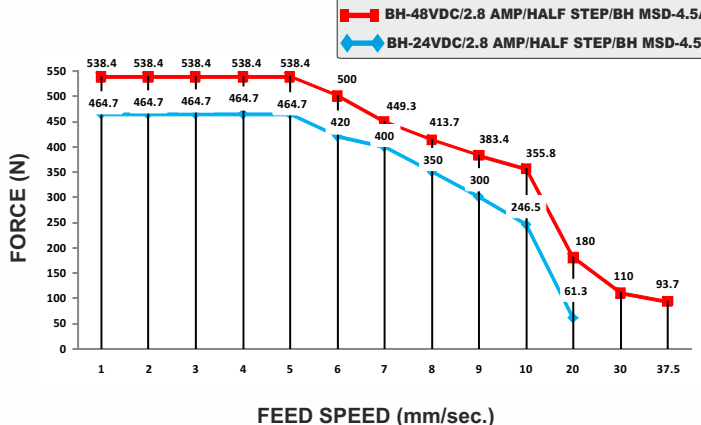
BH 57 SH 76 - 2804 LA-NC (M10 X 1.5)

MODEL		Bipolar
1	Rated Voltage	V 3.36
2	Current / Phase	A 2.8
3	Resistance / Phase ± 10%	Ω 1.2
4	Inductance / Phase ± 20%	mH 4.5
5	Holding Torque	Nm 1.89
6	Weight	KG. 1.250
7	No of Lead	N° 4
8	Operating Voltage	VDC 24 - 48
9	Linear Step size - 7.5 micron per full step	

Wiring Diagram



DRIVE SET



Bholanath Precision Engineering Pvt.Ltd.

11,Kembros Ind.Estate , Sonapur Lane , Bhandup (W),Mumbai - 400078.
Telefax/Phone : 25662856/25664338/67993260 Email : support@bholanath.in
Mobile No : 9920903825/9821671733/9930514603/9819515543/9323166582.