

SPECIFICATION SHEET
Bholanath

NEMA 23(57MM) JAW COUPLING

BH57-JC - 6.35X8
BH57-JC -8X8
BH57-JC -8X9.5
BH57-JC -10X10



COMMITTED TO PRECISION

www.bholanath.in

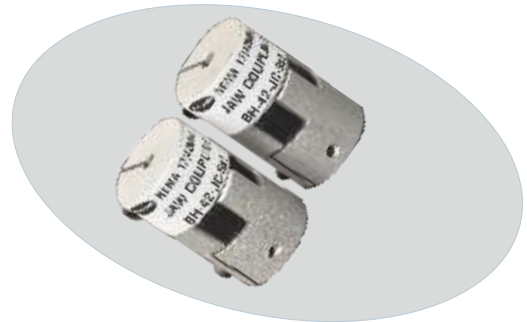
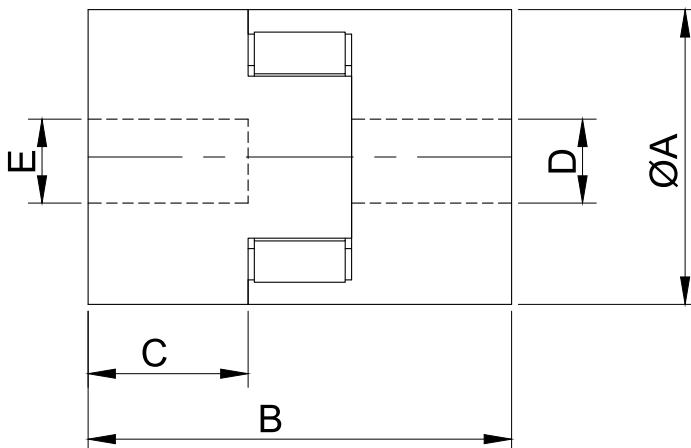
BHOLANATH jaw coupling model no:- suitable for NEMA frame size stepper motor offers FLEXIBILITY,LOW BACKLASH , VIBRATION FREE,NO-MAINTENANCE,NO-LUBRICATION,SHOCK ABSORBTION, NO-TORQUE LOSS,NO-MISALIGNMENT

Suitable For All Motion Control Application.

Performance Characteristic Of Spider Insert

Nominal Torque (Nm)	Hub Material	Shore Hardness	Element Fit	Operating Temp (°C)	Application
2 ~ 525	Special Aerospace Alloy	97	Tight Fit (precompressed contruction)	-30 ~ 80	more torque, less mis-alignment

JAW COUPLING



Sr No	Jaw Coupling Model No	Bore size (mm)A- Motor End	Length (mm) B	C	Bore size (mm)D- Motor End	Bore size (mm)E- Motor End	Weight (Gms)
1	BH57-JC - 6.35X8	Ø35	50.8	19	Ø6.35	Ø8	135
2	BH57-JC -8X8	Ø35	50.8	19	Ø8	Ø8	135
3	BH57-JC -8X9.5	Ø35	50.8	19	Ø8	Ø9.5	135
3	BH57-JC -10X10	Ø35	50.8	19	Ø10	Ø10	135



COMMITTED TO PRECISION

BHOLANATH COOL STEPPERS™

Bholanath Precision Engineering Pvt.Ltd.

11,Kembros Ind.Estate , Sonapur Lane , Bhandup (W),Mumbai - 400078.

Telefax/Phone : 25662856/25664338/67993260 Email : support@bholanath.in

Mobile No : 9920903825/9821671733/9930514603/9819515543/9323166582.