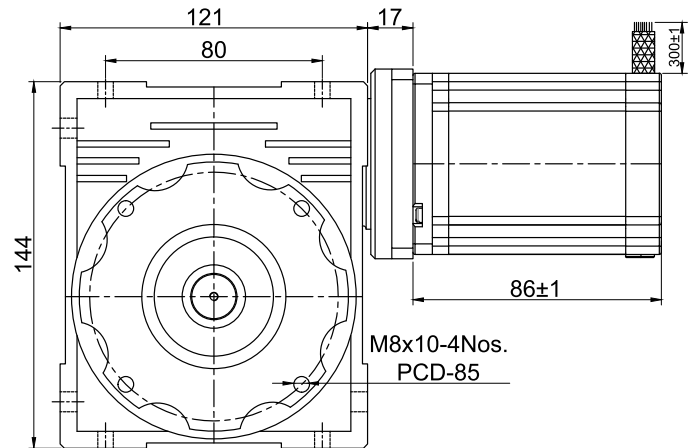
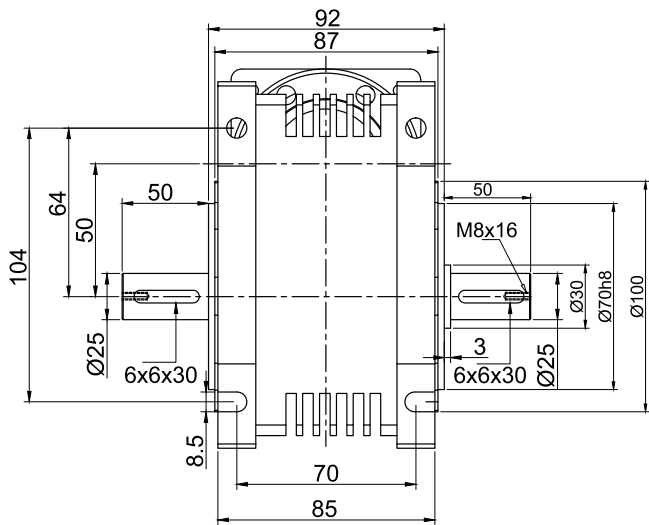


**SPECIFICATION SHEET**  
**Bholanath**

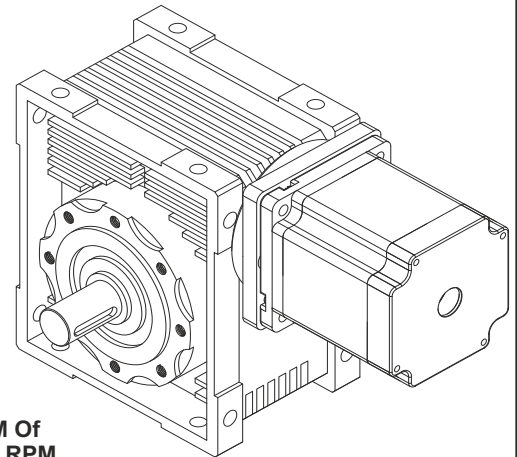
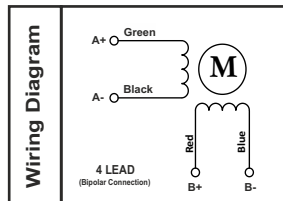
**STEPPER MOTOR**  
**BH60 SH 86 - 2804HL-20**  
**HIGH TORQUE HYBRID**



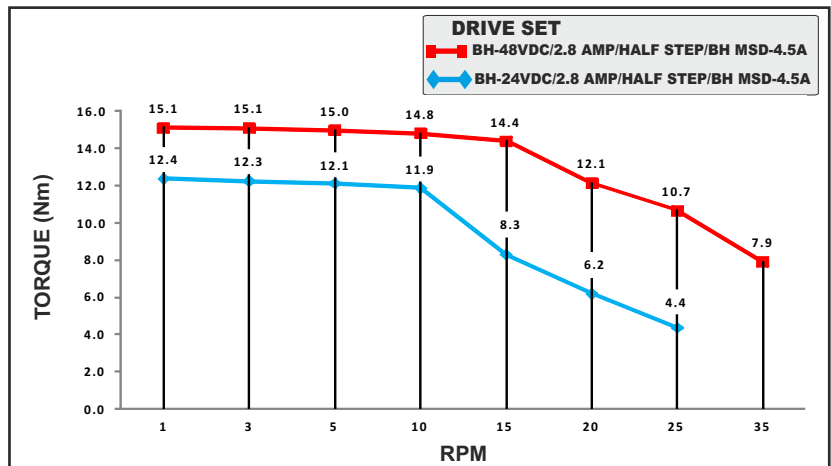
**TECHNICAL DATA**

**CHARACTERISTICS**

Motor - Bipolar
Steps per Revolution - 200
Step Angle - 1.8 degree
Motor Step Angle Accuracy - ± 3 Arc Minute
Dimensions - Refer drawing
Weight with Gear box - 5.85 Kg
Insulation Class - Class 155
Protection Class - DIN40050 - Ip30
Resistance of Insulation - 100M Ω
Resistance per phase ±10% - 1.6 / 1.61 Ω
Inductance per phase ±20% - 6.5 / 6.6 mH
Normal current per phase - 2.8 Amp
Normal Power - 12.5 Watt
Rated Voltage - 4.48
Operating Voltage - 24 - 48 Vdc
Stock Temperature - 10°C To 40°C
Operation Temperature -10°C To 40°C
Holding Torque for Motor - 3.1 Nm
Holding Torque With gear Box - 62.0 Nm (620Kgcm)
Admissible Radial Load < 2503 N
Gear Box Ratio - 20:1
Backlash ≤ 0.8 Degree



Maximum Permissible RPM Of Gearbox output shaft is 30 RPM.



**STEPPER MOTOR - BH60SH86-2804HL-20**



**Bholanath Precision Engineering Pvt.Ltd.**

11, Kembros Ind.Estate, Sonapur Lane, Bhandup (W), Mumbai - 400078.  
 Telefax/Phone : 25662856/25664338/67993260 Email : support@bholanath.in  
 Mobile No : 9920903825/9821671733/9930514603/9819515543/9323166582.