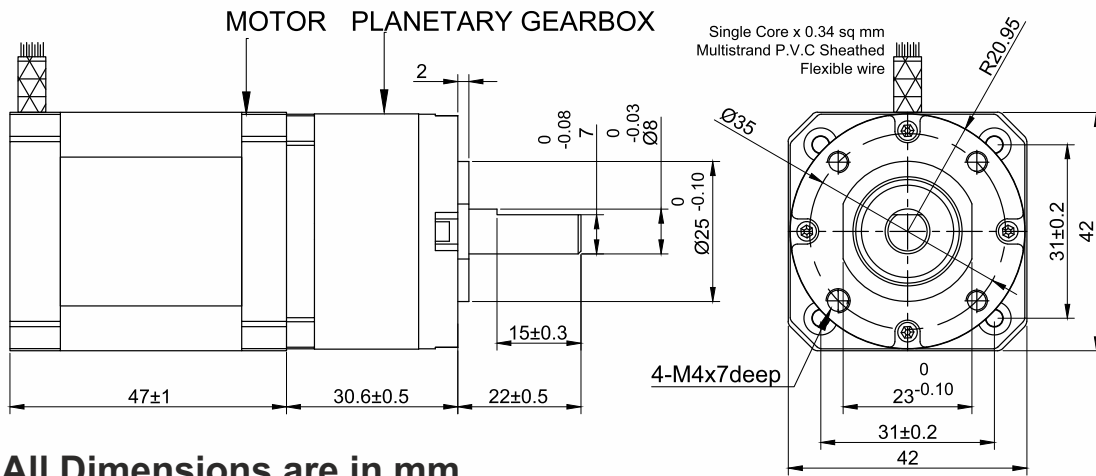


SPECIFICATION SHEET
Bholanath

STEPPER MOTOR
BH42 SH 47 - 1704 PL-22Kgcm
HIGH TORQUE HYBRID

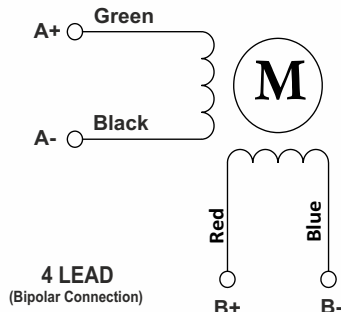


Modification Date 24.05.2017

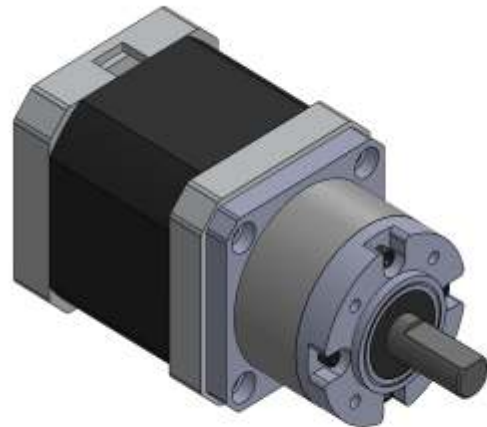
AMENDMENT
O/P Shaft Length Of PL G/B 20mm TO 22mm.
PL G/B step boss OD 22mm TO 25mm
PL G/B Length 27.5mm TO 30.6mm
PL G/B OD 36mm To 42mm
Mounting hole PCD 28mm to 35mm
Mounting hole size M3 to M4
Gear Box Ratio 5.18:1 To 5.2:1

All Dimensions are in mm.

Wiring Diagram



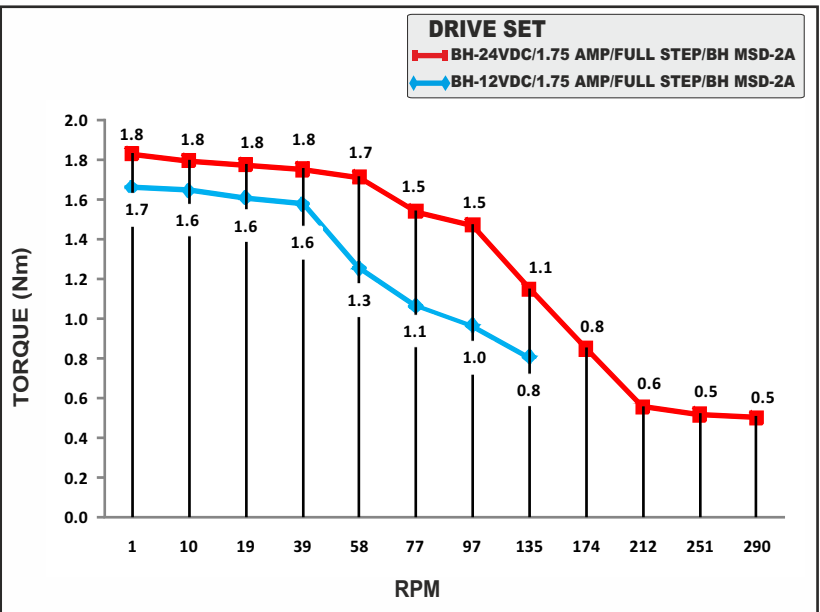
4 LEAD
(Bipolar Connection)



Max.RPM At Gear Box Shaft - 200 RPM

CHARACTERISTICS

- Motor - Bipolar
- Steps per Revolution - 200
- Step Angle - 1.8 degree
- Motor Step Angle Accuracy- ± 3 Arc Minute
- Dimensions - Refer drawing
- Weight with Gear box - 715 g
- Insulation Class - Class H
- Protection Class - DIN40050 - IP30
- Resistance of Insulation - 100M Ω 500 VDC
- Resistance per phase - 1.7 Ω
- Inductance per phase - 2.5 mH
- Normal current per phase - 1.68 Amp
- Operating Voltage - 12 to 24 VDC
- Stock Temperature - (-10°C to + 70°C)
- Operation Temperature - (-10°C to + 40°C)
- Holding Torque Of Motor - 0.44 Nm (4.4 Kgcm)
- Holding Torque with gear Box - 2.2 Nm (22 Kgcm)
- Max Radial Load (12mm from flange) - ≤ 80N
- Max Shaft Axial Load - ≤ 30N
- Radial Play of Shaft (Near to flange) - ≤ 0.06mm
- Axial Play of Shaft - ≤ 0.3mm
- Gear Box Ratio - 5.2:1
- Backlash - 1.5 degree



PLANETARY GEAR BOX STEPPER MOTOR - BH42SH47-1704PL-22Kgcm