

SPECIFICATION SHEET
Bholanath

NEMA 34(86MM) JAW COUPLING

BH86-JC - 12X8
BH86-JC 12X12
BH86-JC - 12.7X12.7
BH86-JC -12.7X14
BH86-JC -14X14



COMMITTED TO PRECISION

www.bholanath.in

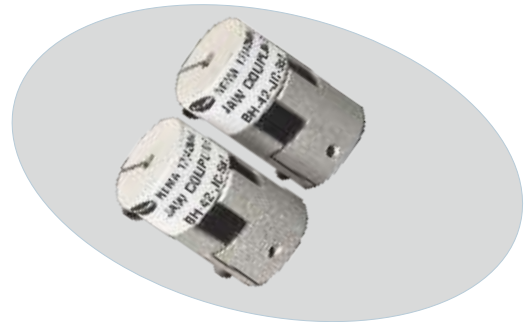
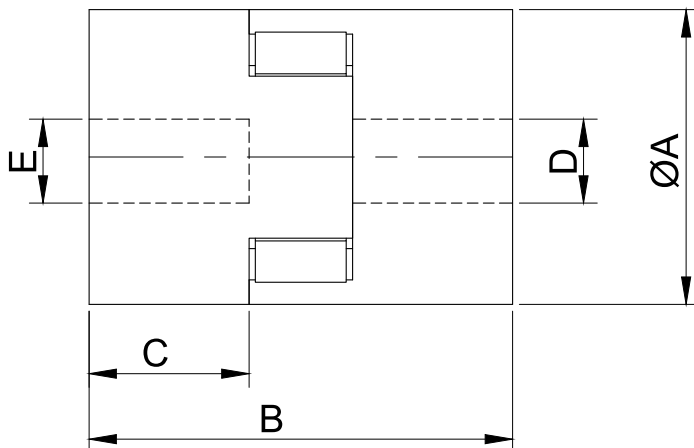
BHOLANATH jaw coupling model no:- suitable for NEMA frame size stepper motor offers FLEXIBILITY,LOW BACKLASH , VIBRATION FREE,NO-MAINTENANCE,NO-LUBRICATION,SHOCK ABSORBITION, NO-TORQUE LOSS,NO-MISALIGNMENT

Suitable For All Motion Control Application.

Performance Characteristic Of Spider Insert

Nominal Torque (Nm)	Hub Material	Shore Hardness	Element Fit	Operating Temp (°C)	Application
2 ~ 525	Special Aerospace Alloy	97	Tight Fit (precompressed construction)	-30 ~ 80	more torque, less mis-alignment

JAW COUPLING



Sr No	Jaw Coupling Model No	Bore size (mm)A- Motor End	Length (mm) B	C	Bore size (mm)D- Motor End	Bore size (mm)E- Motor End	Weight (Gms)
1	BH86-JC - 12X8	Ø65	88	52.8	Ø12	Ø8	700
2	BH86-JC 12X12	Ø65	88	52.5	Ø12	Ø12	700
3	BH86-JC - 12.7X12.7	Ø65	88	52.5	Ø12.7	Ø12.7	700
4	BH86-JC -12.7X14	Ø65	88	52.5	Ø12.7	Ø14	700
5	BH86-JC -14X14	Ø65	88	52.5	Ø14	Ø14	700



Bholanath Precision Engineering Pvt.Ltd.

11,Kembros Ind.Estate , Sonapur Lane , Bhandup (W),Mumbai - 400078.
Telefax/Phone : 25662856/25664338/67993260 Email : support@bholanath.in
Mobile No : 9920903825/9821671733/9930514603/9819515543/9323166582.