

**SPECIFICATION SHEET**  
**Bholanath**

**NEMA 42(110MM)**  
**JAW COUPLING**  
**BH110-JC - 19X19**



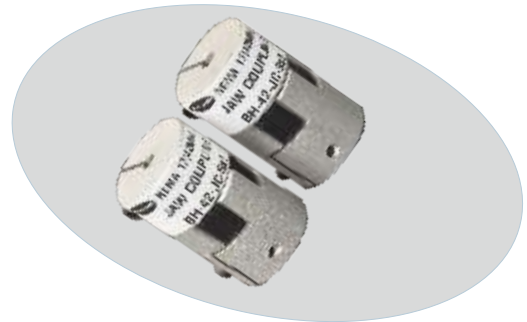
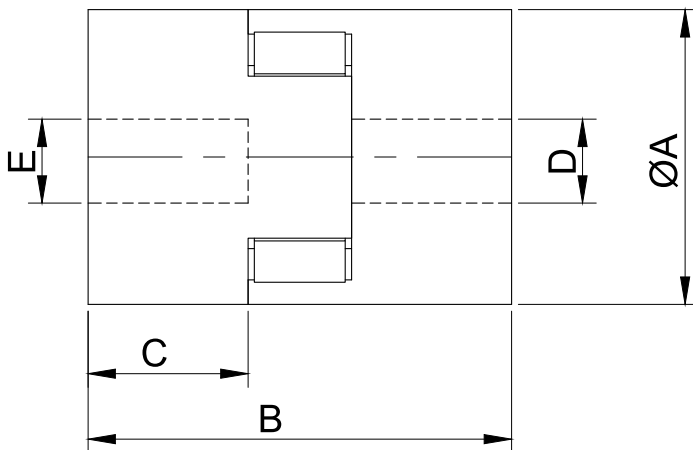
**BHOLANATH** jaw coupling model no:- suitable for NEMA ..... frame size stepper motor offers FLEXIBILITY,LOW BACKLASH , VIBRATION FREE,NO-MAINTENANCE,NO-LUBRICATION,SHOCK ABSORBTION, NO-TORQUE LOSS,NO-MISALIGNMENT

**Suitable For All Motion Control Application.**

**Performance Characteristic Of Spider Insert**

Nominal Torque (Nm)	Hub Material	Shore Hardness	Element Fit	Operating Temp (°C)	Application
2 ~ 525	Special Aerospace Alloy	97	Tight Fit (precompressed construction)	-30 ~ 80	more torque, less mis-alignment

**JAW COUPLING**



Sr No	Jaw Coupling Model No	Bore size (mm)A- Motor End	Length (mm) B	C	Bore size (mm)D- Motor End	Bore size (mm)E- Motor End	Weight (Gms)
1	BH110-JC - 19X19	Ø45	65	19	Ø19	Ø19	135



**Bholanath Precision Engineering Pvt.Ltd.**

11,Kembros Ind.Estate , Sonapur Lane , Bhandup (W),Mumbai - 400078.  
Telefax/Phone : 25662856/25664338/67993260 Email : support@bholanath.in  
Mobile No : 9920903825/9821671733/9930514603/9819515543/9323166582.